



outdoor living spaces

[www.gardenhideouts.co.uk](http://www.gardenhideouts.co.uk)



## Hobby Pod

3mtr x 4.76mtr  
from £20,950  
with factory fitted furniture

4mtr x 4.76mtr  
from £25,950  
with factory fitted furniture  
plus half glazed rear wall

Available unfurnished from £14,950

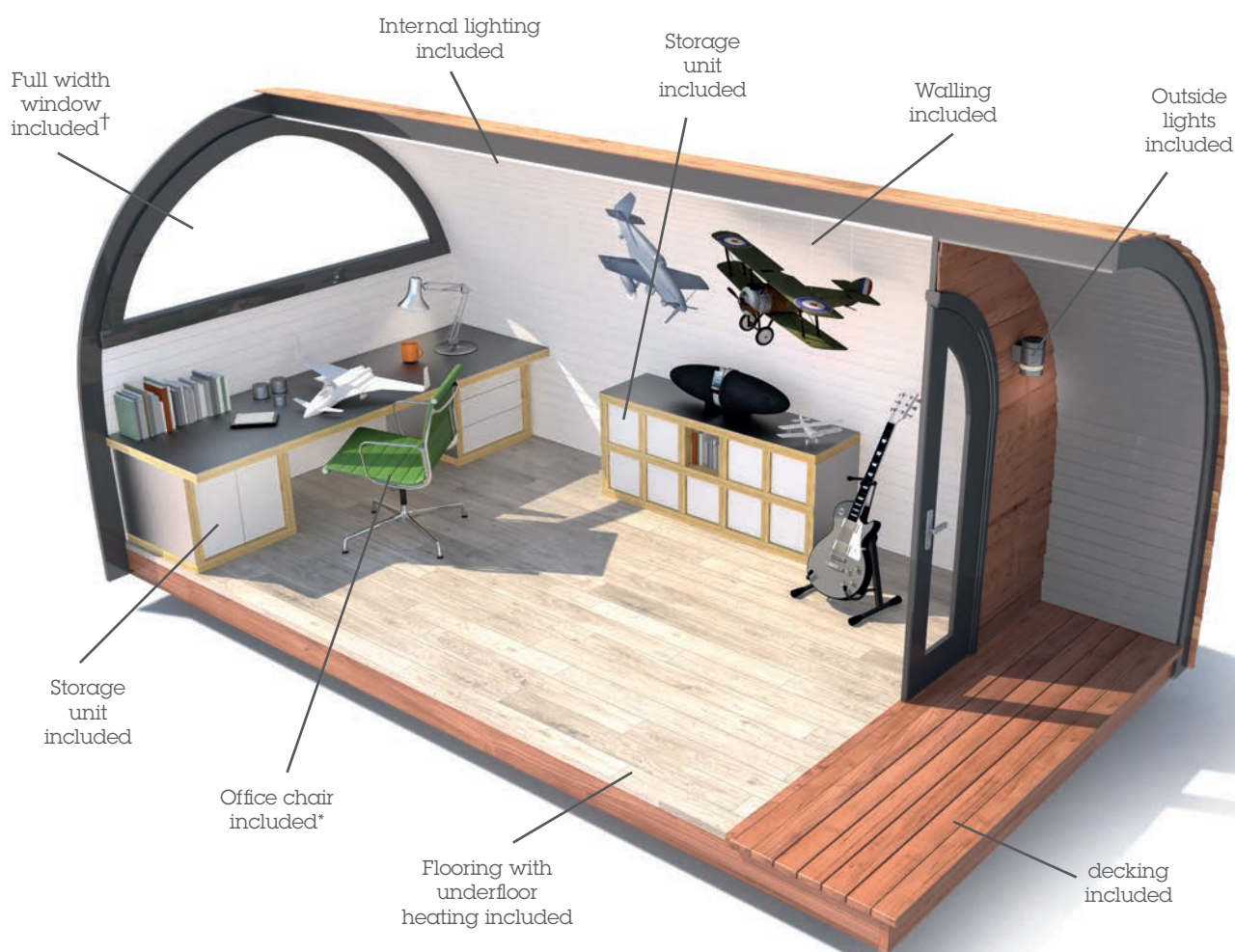
**Derby Office**  
Mercia Marina, Findern Lane, Willington,  
Derbyshire DE65 6DW  
t: 01283 707357

**Hanbury Office**  
Hanbury Wharf, Hanbury Road, Droitwich,  
Worcester WR9 7DU  
t: 01905 794445

# Hobby Pod

The Hobby Pod from Garden Hideouts provides a very adaptable space with a host of options to help you get the most out of your particular interest. From a half glazed wall for extra daylight to a quality work bench and stacks of storage, this is a place to get away from it all and really immerse yourself in your hobby.

The sales consultants at Garden Hideouts will be pleased to sit down with you and talk over exactly what you need in your Hobby Pod. This could be spotlights to brightly illuminate an area for intricate work or extra drawers to keep everything tidily tucked away. All in all, you can rely on achieving the perfect space for your pastime that will be cosy and comfortable all year round.



3mtr x 4.76mtr  
**from £20,950**  
 with factory fitted furniture

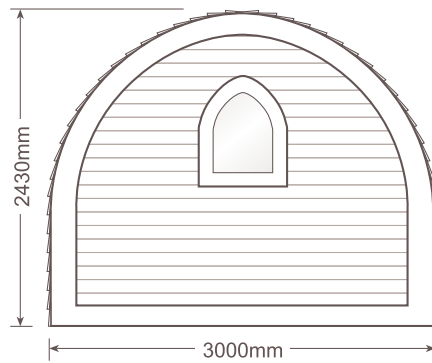
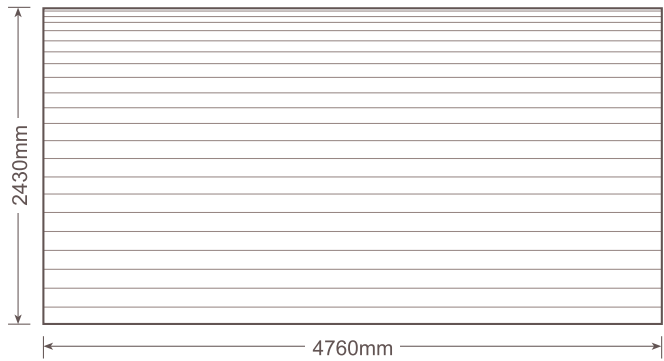
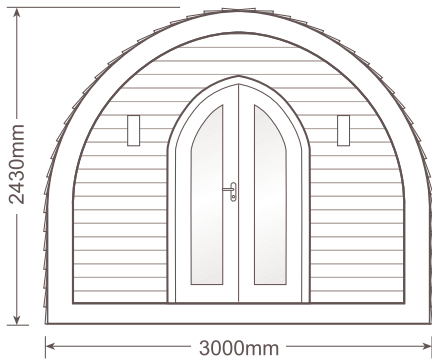
4mtr x 4.76mtr  
**from £25,950**  
 with factory fitted furniture  
 plus partially glazed rear wall

Available unfurnished from £14,950

\*Examples shown for visual purposes only. †Only available on the 4mtr pod version.

# 3mtr Plans

## External



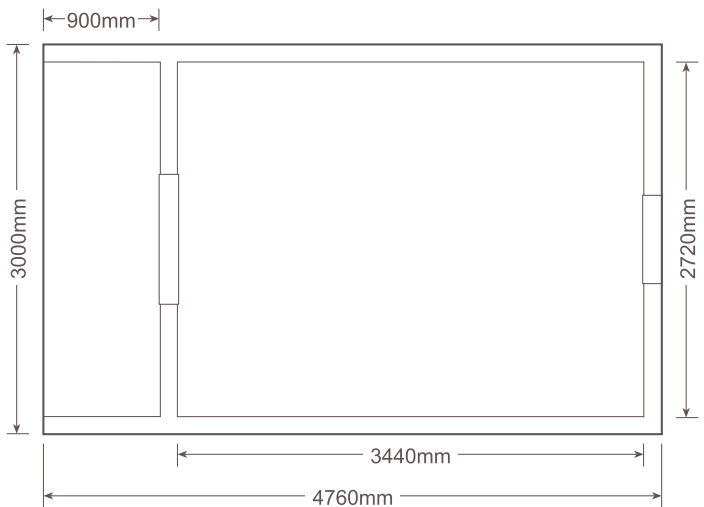
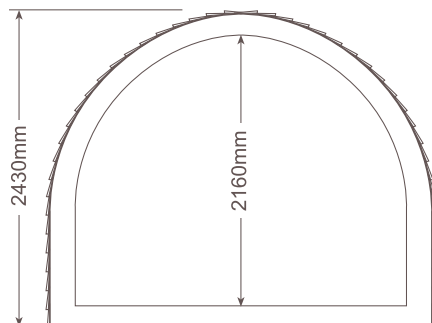
### Dimensions\*

External Width: 3000mm    Internal Width: 2720mm  
External Length: 4760mm    Internal Length: 3440mm  
External Height: 2430mm    Internal Height: 2160mm

External Deck Area: 900mm x 2760mm  
Door Dimensions: 1760mm x 1000mm  
Window Dimensions: 850mm x 680mm

Internal Floor Area: 9.96m<sup>2</sup>

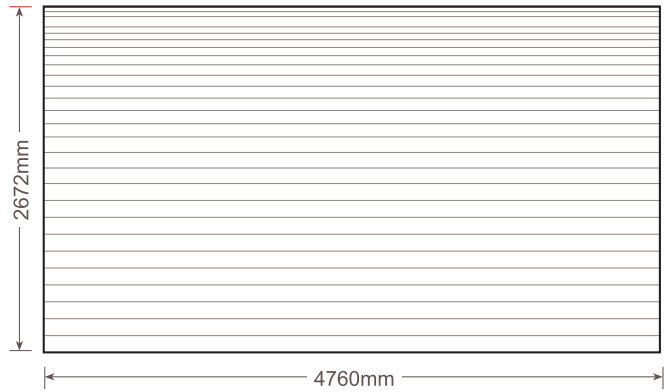
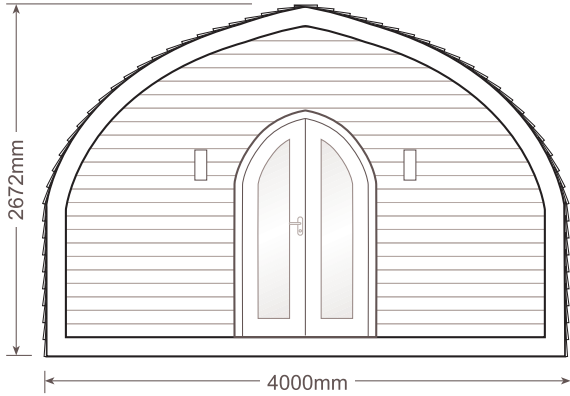
## Internal



\*Sizes are approximate, as these are hand crafted products measurements may vary.

# 4mtr Plans

## External

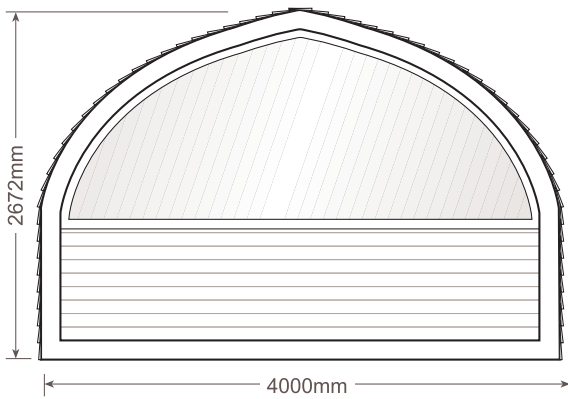


## Dimensions\*

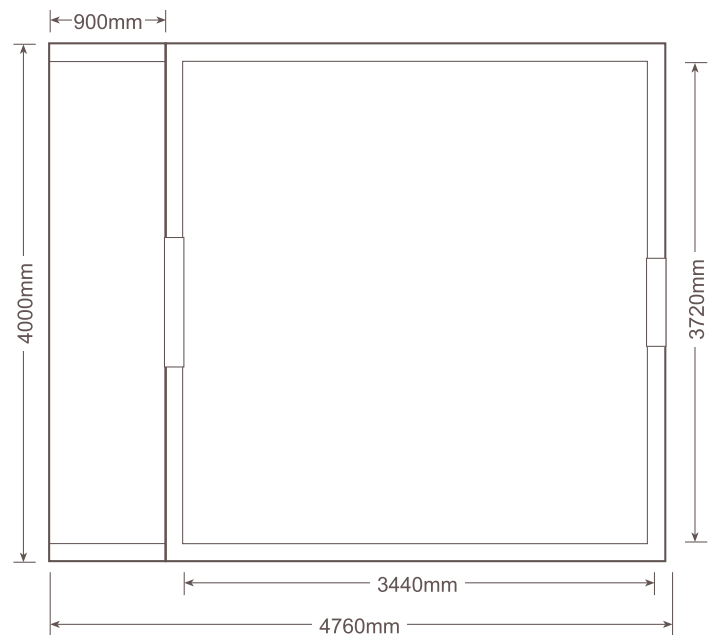
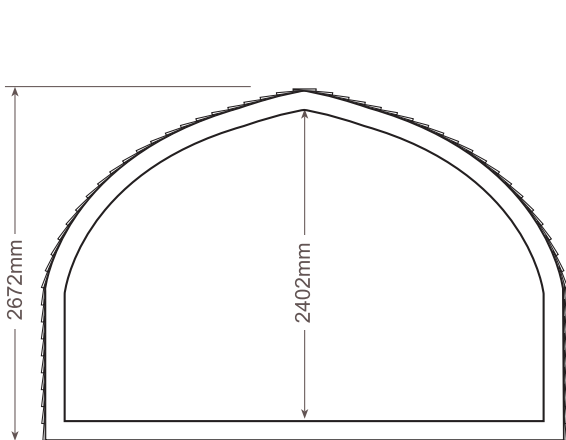
External Width: 4000mm    Internal Width: 3720mm  
External Length: 4760mm    Internal Length: 3440mm  
External Height: 2672mm    Internal Height: 2402mm

External Deck Area: 900mm x 3760mm  
Door Dimensions: 1760mm x 1000mm  
Window Dimensions: 1350mm x 3500mm

Internal Floor Area: 12.80m<sup>2</sup>

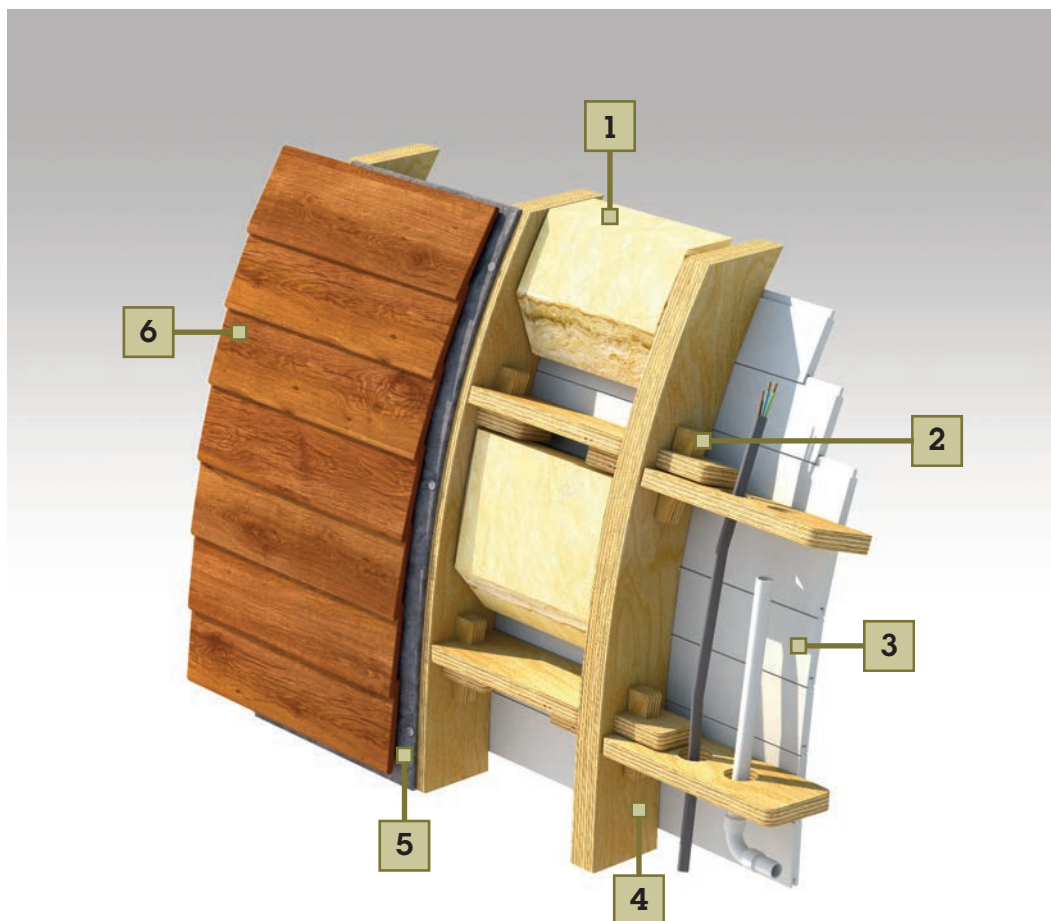


## Internal



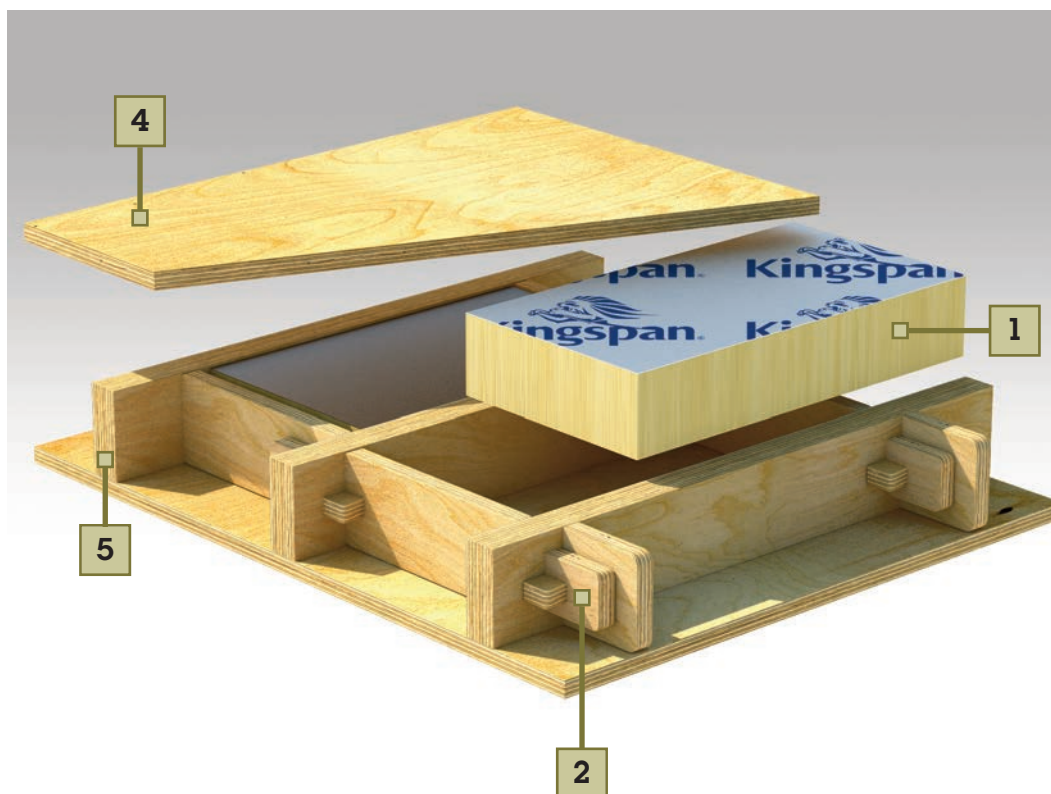
\*Sizes are approximate, as these are hand crafted products measurements may vary.

# Technical - Walls



- 1** The framework cavity is insulated with a highly efficient layer of ecologically sound 100mm flexible mineral wool. The semi-rigid shape of the insulation allows it to be measured and cut accurately filling the void more completely, thereby providing excellent all year round thermal and acoustic performance.
- 2** The rigidity of the framework is compounded by the use of a tried and trusted tusk tenon and wedge jointing system, this jointing method creates a uniquely strong and versatile joint.
- 3** The interior of our Pod is lined with select grade Scandinavian redwood tongue and groove cladding. The primed and beautifully finished horizontal cladding not only adds a feeling of depth and substance to the interior, but also compounds the buildings overall structural rigidity.
- 4** The framework is constructed from a dual layer of bonded 18mm 'Grade A' structural plywood which has been sustainably sourced directly from Finland. Professionally cut from a unique CAD design by commercial CNC machinery, the precision framework design delivers a rigid and long lasting monocoque structure.
- 5** The slow grown Western Red Cedar exterior cladding used on our buildings is not only aesthetically pleasing, but it is exceptionally durable, stable and of course ethically sourced. Our Western Red Cedar cladding can be either hand oiled to preserve its rich colour or alternatively left untreated turning a muted silver grey over the seasons.
- 6** The rigidity of the framework is compounded by the use of a tried and trusted tusk tenon and wedge jointing system, this jointing method creates a uniquely strong and versatile joint.

## Technical - Floors



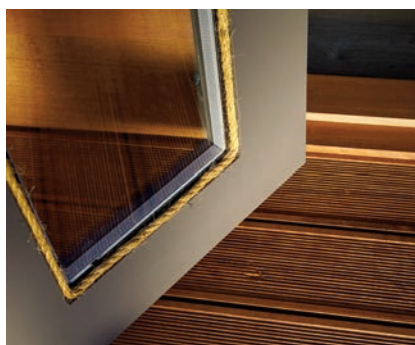
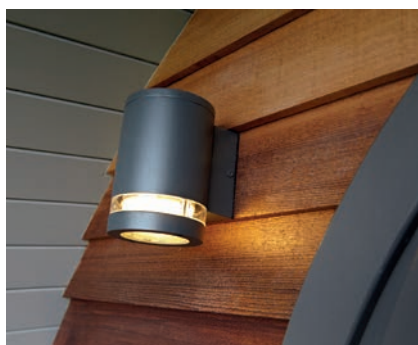
- 1 The base framework cavity is insulated with premium performance 100mm foil faced rigid insulation. The high compressive strength and water resistance of the insulation makes it ideal for the floor void, providing excellent all year round thermal performance.
- 2 The rigidity of the floor framework is compounded by the use of a tried and trusted tusk tenon and wedge jointing system, this jointing method creates a uniquely strong and versatile joint.
- 3 Constructed from a dual layer of bonded 18mm 'Grade A' structural plywood which has been sustainably sourced directly from Finland. Professionally cut from a unique CAD design by commercial CNC machinery, the precision framework design delivers a rigid and long lasting permanent base framework.
- 4 Our subfloor is constructed from exterior grade hardwood ply bonded with water resistant adhesives to create a strong, flat and rigid base layer.

## Key features

All Pods from Garden Hideouts have been designed to offer a practical and attractive space that has been built for durability, warmth and weather-proofing.

Each building is constructed from a dual layer of bonded 18mm 'Grade A' structural ply. This has been sustainably sourced directly from Finland before being professionally cut from a unique CAD design on our CNC machinery. The building's precision built framework utilises the tried and trusted tusk tenon and wedge system. The result is uniquely strong series of joints, delivering a rigid, robust and long-lasting structural frame.

- **Western Red Cedar exterior cladding: ethically-sourced and slow-grown.**  
Can be either hand-oiled to preserve its rich colour or left untreated to turn silver-grey over the seasons.
- **Select grade Scandinavian Redwood tongue and groove interior cladding.**  
Primed, painted and immaculately finished
- **Framework cavity insulated with a layer of ecologically sound 100mm flexible mineral wool.** The semi-rigid shape of the insulation allows it to be measured and cut accurately filling the void more completely, thereby providing excellent all year round thermal and acoustic performance.
- **'A' rated double glazed bespoke wooden door and window units.**
- **Optional distinctive half-glazed end panel.**
- **Quick-Step Impressive laminate flooring with water-repellent 'Hydroseal' coating.**
- **Certified electrical system with high quality finish outlets.**
- **Fully delivered to site and professionally constructed.**



# General Specification

## Foundations

The most suitable type of foundation will be selected for the ground conditions where the Pod is to be sited to ensure a secure base for the building.

## Framework

### Walls

100mm x 36mm sustainably sourced precision cut Grade 'A' structural ply fixed at joint cross sections with a tusk tenon and wedge system.

### Floor

18mm Grade 'A' quality exterior ply floor and internal subfloor.

## Insulation

### Walls

100mm flexible mineral wool insulation with a U-value 0.22w/m<sup>2</sup>K\* installed within each natural cavity section of the framework.

### Floor

100mm foil faced rigid foam insulation board with a U-value of 0.26w/m<sup>2</sup>K\* installed within the floor and subfloor cavity.

## External Cladding

150mm x 15mm Western Redwood Cedar featheredge boards installed with a 50mm overlap and secured with galvanised fixings over a high performance breathable vapour membrane. Hand finished with satin-matt microporous UV protection oil.

## Internal Cladding

90mm x 20mm Scandinavian Redwood tongue and groove. Hand primed and painted with BS6150 compliant high quality acrylic primer and emulsion.

## Electrics & Lighting

17th Edition compliant consumer unit and wiring with current Part P certification.

## Doors & Windows

Tricoya wood double glazed 'A' rated toughened glass units. So hard wearing and weather resistant they come with a 50 year guarantee. Fungal resistant and super-low maintenance.



# Hobby Pod Specifics

## Workbench

The attractive workbench comes with a Zinc plated steel surface approximately 40mm thick, providing a highly durable flat surface ideal for even the most intricate work. The exposed edge plywood gives contemporary styling to this practical item of furniture. Includes drawers and storage units (details below).

## Storage

The workbench is fitted with a number of neat storage options to keep tools, materials and so on very close to hand. On the left hand side are doors and storage units, on the right a set of drawers. Or if preferred, the workbench can be fitted with drawers on both sides.

Above the workbench are 4 floating shelves with downlighters set inside them for an atmospheric effect. Ideal for display, the shelves can be painted in any colour of choice.

Against one wall is a Pigeon-Hole unit which has exposed edge plywood to visually harmonise with the workbench. Each side is 18mm thick with a lacquered decorative top. If required, doors can be fitted to one or all of the pigeon-holes.

## Floorcoverings

The entire floor is fitted with Quick-Step Impressive laminate flooring, which not only looks aesthetically pleasing but also has a water-repellent 'Hydrosed' coating to provide a durable and spill-proof surface.

## Heating

Underfloor heating combines with high-efficiency insulation to provide a supremely warm and comfortable environment. The heating is operated via a timer unit for maximum convenience and economy.

## Lighting

The standard lighting is a set of downlighters in a crushed stainless finish. However, lights can be provided to suit different needs, including directional spotlights. All light switches are in a polished chrome finish.

## Sockets

Polished chrome 240v sockets are spaced around the Pod to suit specific needs. All sockets come complete with a USB adapter.

## Optional Extras

All our models are designed to a high standard specification within each range. However, because we design and construct your building from scratch you can of course request upgrades or additional items for your build. Your surveyor will be happy to talk through with you what exactly can be achieved by way of tailoring a standard specification or adding a number of additional items.

## Warranties

In order that you can enjoy your building for years to come we ensure that all our models are constructed to the very highest standards using only the finest quality materials. However, in the event that you do experience any issue with your buildings construction or it's component parts, we provide the following warranty cover as standard on all our ranges, right from the date that your building is built.

### **25-year Full Structural Framework Warranty**

The strength and integrity of your buildings framework is such, that properly maintained and protected from the elements it will remain strong and stable for years to come. Our unique 25 year structural warranty provides the ultimate peace of mind.

### **Full 12 months Warranty**

We guarantee that our buildings will be free from any significant material defect or faulty workmanship for a period of 12 months from the date of delivery or construction. The warranty covers all workmanship, materials, standard and buyer specified fixtures and fittings, wiring and utility connections.

