



outdoor living spaces

www.gardenhideouts.co.uk



Luxe Pod

3mtr x 4.76mtr
from £19,950
not including bathroom

4mtr x 4.76mtr
from £21,950
not including bathroom

Available unfurnished from £14,950

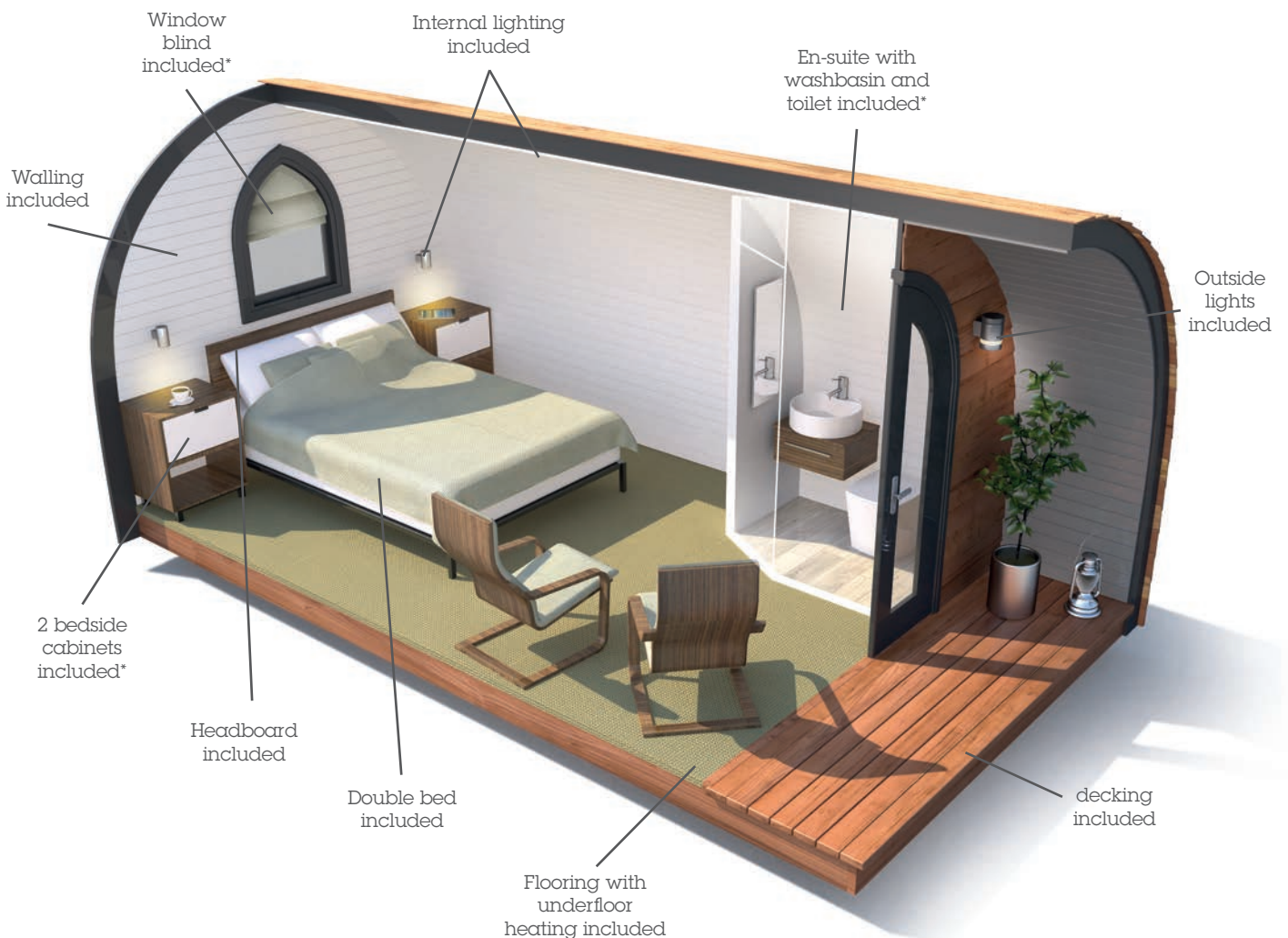
Derby Office
Mercia Marina, Findern Lane, Willington,
Derbyshire DE65 6DW
t: 01283 707357

Hanbury Office
Hanbury Wharf, Hanbury Road, Droitwich,
Worcester WR9 7DU
t: 01905 794445

Luxe Pod

The Guest Pod from Garden Hideouts provides a comfortable space for up to two guests. It is the perfect solution whether used as an extra bedroom to accommodate family or friends, or in a commercial capacity as an additional room for a hospitality business such as a B&B.

The Pod has been designed to be self-sufficient if required, with facilities ranging from a solid oak double bed to a washroom and en-suite which can include a shower. With carpeting and underfloor heating plus high grade insulation to keep the warmth in and noise out, this is a room that always feels wonderfully relaxing and well-appointed.



3mtr x 4.76mtr
 from £19,950
 not including bathroom

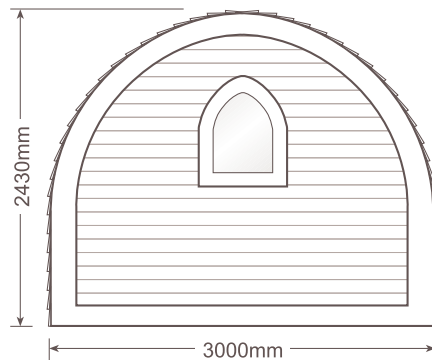
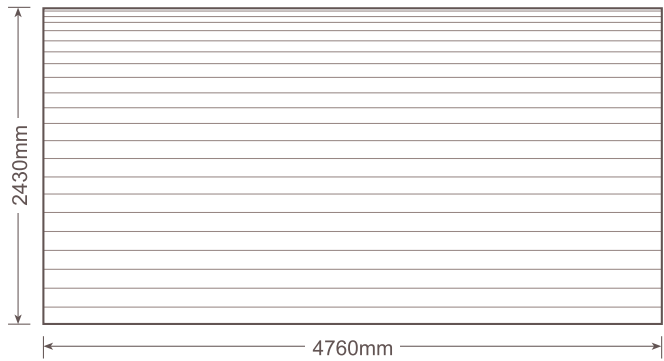
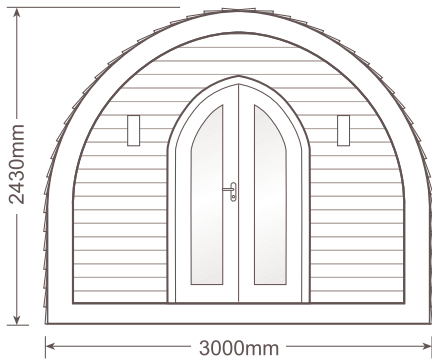
4mtr x 4.76mtr
 from £21,950
 not including bathroom

Available unfurnished from £14,950

*Examples shown for visual purposes only.

3mtr Plans

External



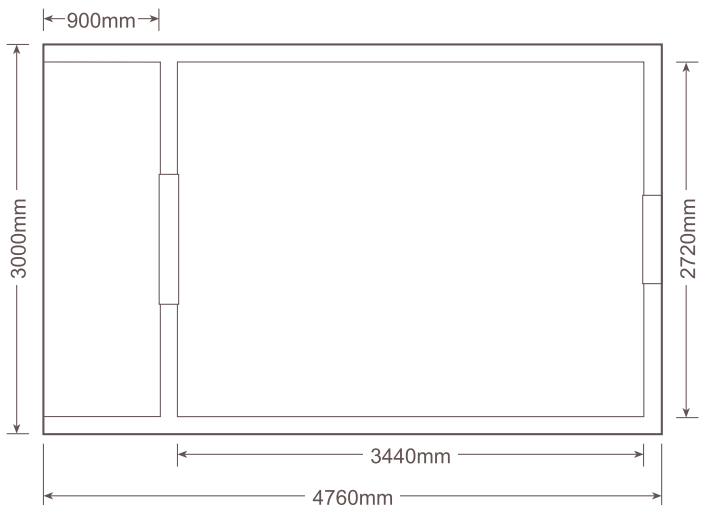
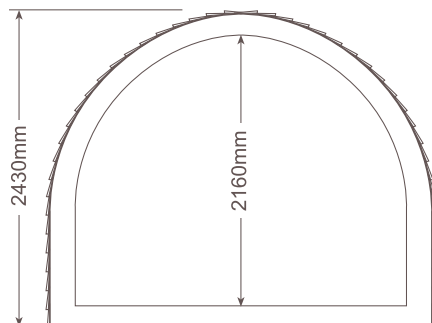
Dimensions*

External Width: 3000mm Internal Width: 2720mm
External Length: 4760mm Internal Length: 3440mm
External Height: 2430mm Internal Height: 2160mm

External Deck Area: 900mm x 2760mm
Door Dimensions: 1760mm x 1000mm
Window Dimensions: 850mm x 680mm

Internal Floor Area: 9.96m²

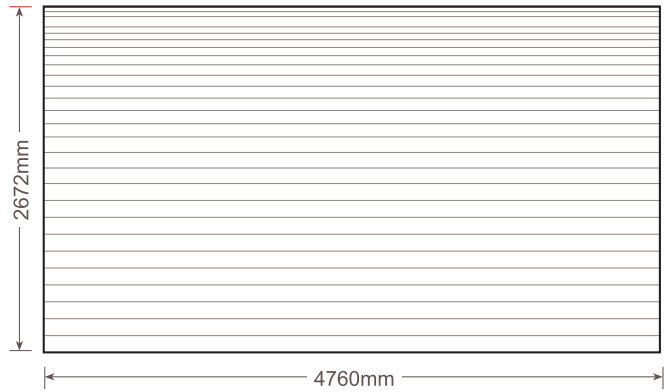
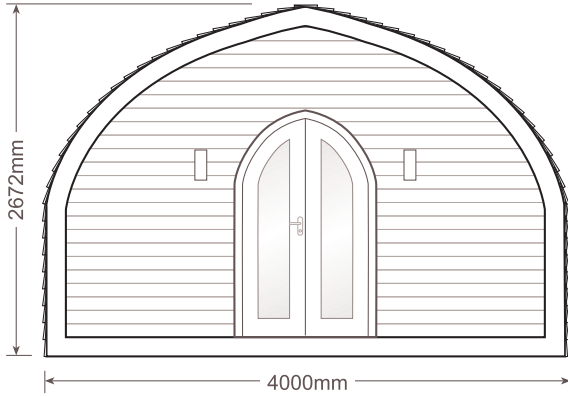
Internal



*Sizes are approximate, as these are hand crafted products measurements may vary.

4mtr Plans

External

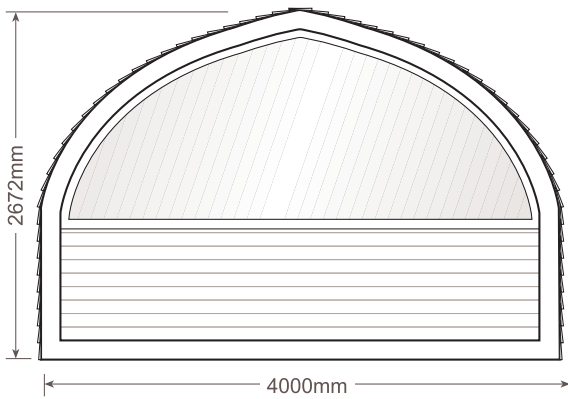


Dimensions*

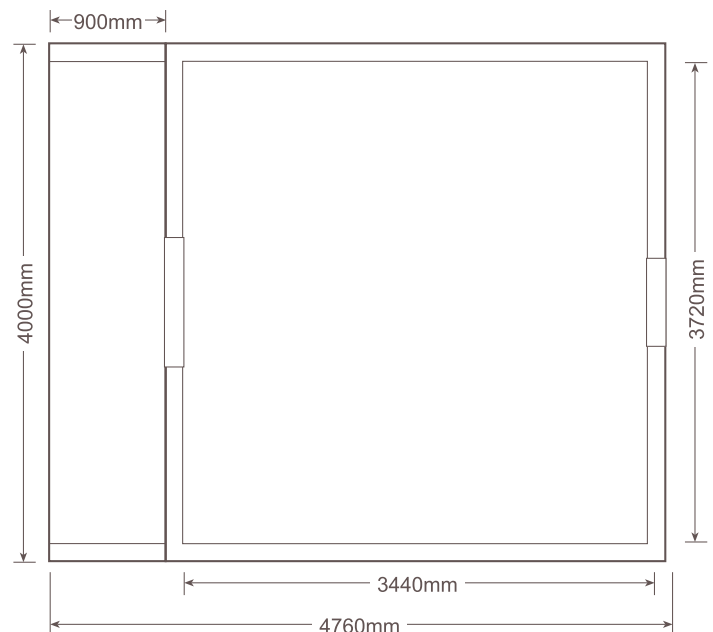
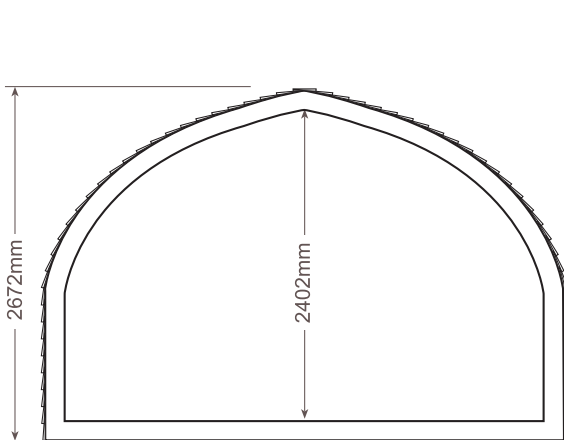
External Width: 4000mm Internal Width: 3720mm
External Length: 4760mm Internal Length: 3440mm
External Height: 2672mm Internal Height: 2402mm

External Deck Area: 900mm x 3760mm
Door Dimensions: 1760mm x 1000mm
Window Dimensions: 1350mm x 3500mm

Internal Floor Area: 12.80m²

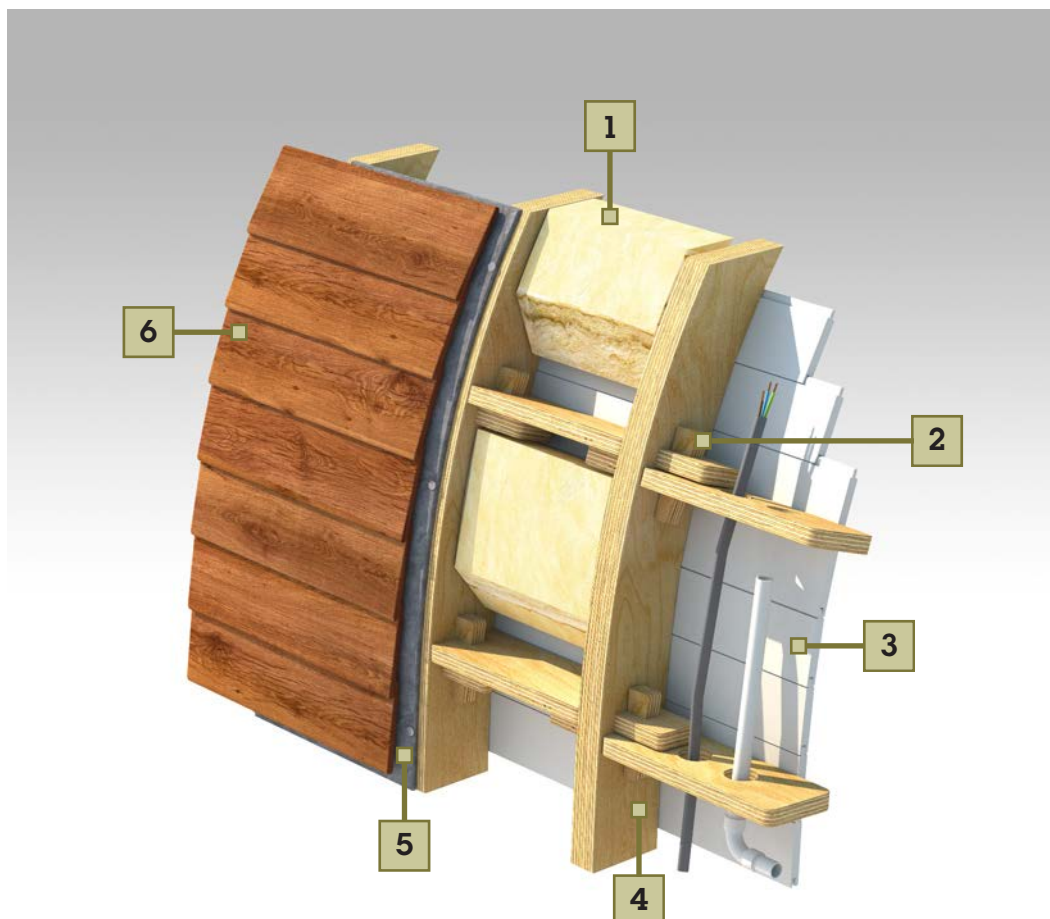


Internal



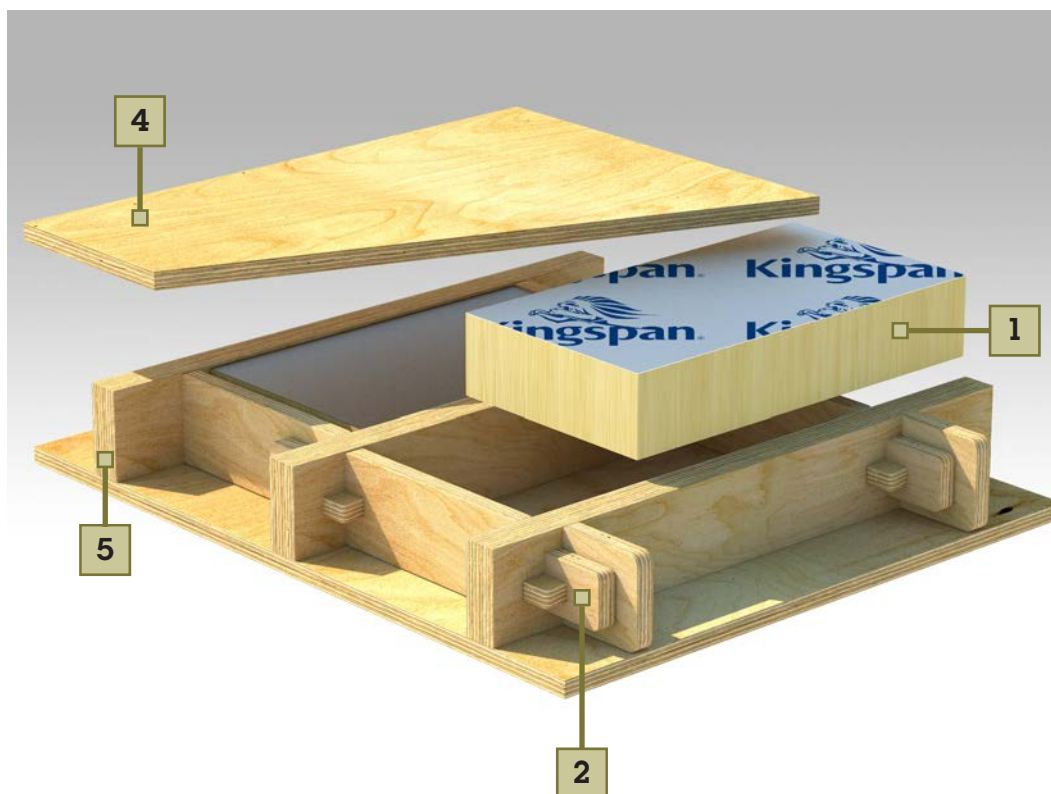
*Sizes are approximate, as these are hand crafted products measurements may vary.

Technical - Walls



- 1** The framework cavity is insulated with a highly efficient layer of ecologically sound 100mm flexible mineral wool. The semi-rigid shape of the insulation allows it to be measured and cut accurately filling the void more completely, thereby providing excellent all year round thermal and acoustic performance.
- 2** The rigidity of the framework is compounded by the use of a tried and trusted tusk tenon and wedge jointing system, this jointing method creates a uniquely strong and versatile joint.
- 3** The interior of our Pod is lined with select grade Scandinavian redwood tongue and groove cladding. The primed and beautifully finished horizontal cladding not only adds a feeling of depth and substance to the interior, but also compounds the buildings overall structural rigidity.
- 4** The framework is constructed from a dual layer of bonded 18mm 'Grade A' structural plywood which has been sustainably sourced directly from Finland. Professionally cut from a unique CAD design by commercial CNC machinery, the precision framework design delivers a rigid and long lasting monocoque structure.
- 5** The slow grown Western Red Cedar exterior cladding used on our buildings is not only aesthetically pleasing, but it is exceptionally durable, stable and of course ethically sourced. Our Western Red Cedar cladding can be either hand oiled to preserve its rich colour or alternatively left untreated turning a muted silver grey over the seasons.
- 6** The rigidity of the framework is compounded by the use of a tried and trusted tusk tenon and wedge jointing system, this jointing method creates a uniquely strong and versatile joint.

Technical - Floors



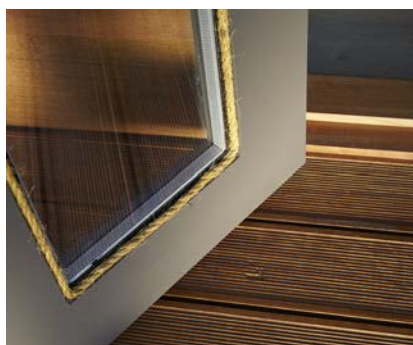
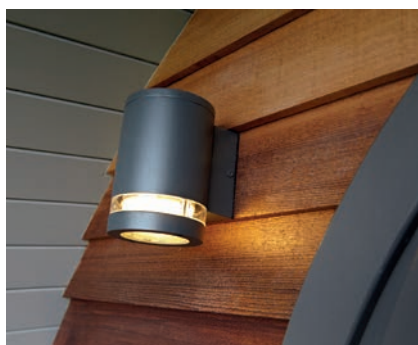
- 1 The base framework cavity is insulated with premium performance 100mm foil faced rigid insulation. The high compressive strength and water resistance of the insulation makes it ideal for the floor void, providing excellent all year round thermal performance.
- 2 The rigidity of the floor framework is compounded by the use of a tried and trusted tusk tenon and wedge jointing system, this jointing method creates a uniquely strong and versatile joint.
- 3 Constructed from a dual layer of bonded 18mm 'Grade A' structural plywood which has been sustainably sourced directly from Finland. Professionally cut from a unique CAD design by commercial CNC machinery, the precision framework design delivers a rigid and long lasting permanent base framework.
- 4 Our subfloor is constructed from exterior grade hardwood ply bonded with water resistant adhesives to create a strong, flat and rigid base layer.

Key features

All Pods from Garden Hideouts have been designed to offer a practical and attractive space that has been built for durability, warmth and weather-proofing.

Each building is constructed from a dual layer of bonded 18mm 'Grade A' structural ply. This has been sustainably sourced directly from Finland before being professionally cut from a unique CAD design on our CNC machinery. The building's precision built framework utilises the tried and trusted tusk tenon and wedge system. The result is uniquely strong series of joints, delivering a rigid, robust and long-lasting structural frame.

- **Western Red Cedar exterior cladding: ethically-sourced and slow-grown.**
Can be either hand-oiled to preserve its rich colour or left untreated to turn silver-grey over the seasons.
- **Select grade Scandinavian Redwood tongue and groove interior cladding.**
Primed, painted and immaculately finished
- **Framework cavity insulated with a layer of ecologically sound 100mm flexible mineral wool.** The semi-rigid shape of the insulation allows it to be measured and cut accurately filling the void more completely, thereby providing excellent all year round thermal and acoustic performance.
- **'A' rated double glazed bespoke wooden door and window units.**
- **Optional distinctive half-glazed end panel.**
- **Quick-Step Impressive laminate flooring with water-repellent 'Hydroseal' coating.**
- **Certified electrical system with high quality finish outlets.**
- **Fully delivered to site and professionally constructed.**



General Specification

Foundations

The most suitable type of foundation will be selected for the ground conditions where the Pod is to be sited to ensure a secure base for the building.

Framework

Walls

100mm x 36mm sustainably sourced precision cut Grade 'A' structural ply fixed at joint cross sections with a tusk tenon and wedge system.

Floor

18mm Grade 'A' quality exterior ply floor and internal subfloor.

Insulation

Walls

100mm flexible mineral wool insulation with a U-value 0.22w/m²K* installed within each natural cavity section of the framework.

Floor

100mm foil faced rigid foam insulation board with a U-value of 0.26w/m²K* installed within the floor and subfloor cavity.

External Cladding

150mm x 15mm Western Redwood Cedar featheredge boards installed with a 50mm overlap and secured with galvanised fixings over a high performance breathable vapour membrane. Hand finished with satin-matt microporous UV protection oil.

Internal Cladding

90mm x 20mm Scandinavian Redwood tongue and groove. Hand primed and painted with BS6150 compliant high quality acrylic primer and emulsion.

Electrics & Lighting

17th Edition compliant consumer unit and wiring with current Part P certification.

Doors & Windows

Tricoya wood double glazed 'A' rated toughened glass units. So hard wearing and weather resistant they come with a 50 year guarantee. Fungal resistant and super-low maintenance.

Luxe Pod Specifics

Bed

Solid oak 4ft double-bed complete with sprung mattress. Head and foot boards feature attractive panel effect or for those seeking that extra luxurious touch there is also an option for an upholstered headboard.

Bedside accessories

Two solid hardwood cabinets with drawers are neatly positioned either side of bed. A double switch by the bed operates the main lights plus two wall-mounted reading lights above, styled to match the interior design.

En-suite

The washing and toilet facilities are situated in a corner unit, purpose-built from 18mm structural plywood and ergonomically designed. Includes a vanity basin seated on top of a floating style unit with drawer and full height mirror over. The modern toilet unit comes in a choice of two modes – sewer-connected or Thetford cartridge-emptying system.

Shower-unit option

In situations where the Pod needs to provide guests with complete freedom, there is the option of including a shower unit in the washing facilities. Because of the extra space required this will mean the reduction of the decking area whilst adding waist-height side extensions stretching out 1mtr.

Floorcoverings

Immediately around the bed is a soft carpet with deep underlay for luxurious 'foot-feel'. The remaining area is fitted with Quick-Step Impressive oak laminate flooring with water-repellent 'Hydroseal' coating.

Blinds

A Roman Blind is fitted to the 'church-style' window with a choice of fabrics available to complement the interior style.

Heating

Underfloor heating combines with high-efficiency insulation to provide a supremely warm and comfortable environment. The heating is operated via a timer unit for maximum convenience and economy.

Shelving

Two floating shelves on the forward wall and two on the bathroom wall are perfectly positioned whether for practical or ornamental use. Shelves can be painted to a preferred colour and feature inset downlighters for atmospheric effect.

Sockets

Polished chrome 240v sockets are spaced around the Pod to suit specific needs. All sockets come complete with a USB adapter.

Optional Extras

All our models are designed to a high standard specification within each range. However, because we design and construct your building from scratch you can of course request upgrades or additional items for your build. Your surveyor will be happy to talk through with you what exactly can be achieved by way of tailoring a standard specification or adding a number of additional items.

Warranties

In order that you can enjoy your building for years to come we ensure that all our models are constructed to the very highest standards using only the finest quality materials. However, in the event that you do experience any issue with your buildings construction or it's component parts, we provide the following warranty cover as standard on all our ranges, right from the date that your building is built.

25-year Full Structural Framework Warranty

The strength and integrity of your buildings framework is such, that properly maintained and protected from the elements it will remain strong and stable for years to come. Our unique 25 year structural warranty provides the ultimate peace of mind.

Full 12 months Warranty

We guarantee that our buildings will be free from any significant material defect or faulty workmanship for a period of 12 months from the date of delivery or construction. The warranty covers all workmanship, materials, standard and buyer specified fixtures and fittings, wiring and utility connections.

