



outdoor living spaces

[www.gardenhideouts.co.uk](http://www.gardenhideouts.co.uk)



## Entertainment Pod

3mtr x 4.76mtr

from £18,950

with electronic equipment

4mtr x 4.76mtr

from £20,950

with electronic equipment  
not including half glazed wall

Available unfurnished from £14,950

### Derby Office

Mercia Marina, Findern Lane, Willington,  
Derbyshire DE65 6DW  
t: 01283 707357

### Hanbury Office

Hanbury Wharf, Hanbury Road, Droitwich,  
Worcester WR9 7DU  
t: 01905 794445

# Entertainment Pod

The Entertainment Pod from Garden Hideouts is the ultimate space in which to enjoy music or a film, or simply have a great time with friends or family. The interior is a stylish and comfortable environment all year round, just perfect for relaxing or entertaining.

Specially fitted out to make the most of today's media systems, it comes with our standard hi-fi and TV, or of course you can specify your own system. Either way, it's the perfect place to party and enjoy yourself without disturbing anyone.



3mtr x 4.76mtr  
**from £18,950**  
 with electronic equipment

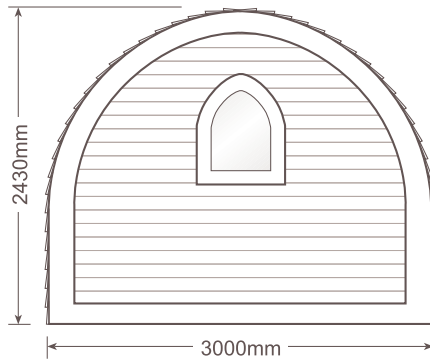
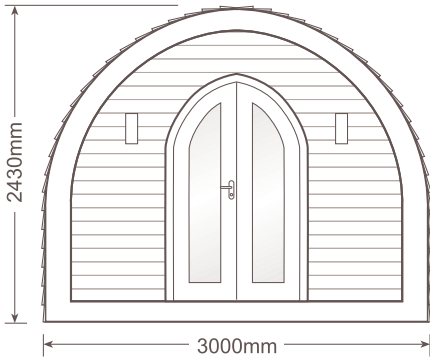
4mtr x 4.76mtr  
**from £20,950**  
 with electronic equipment  
 not including half glazed wall

Available unfurnished from £14,950

\*Examples shown for visual purposes only.

# 3mtr Plans

## External



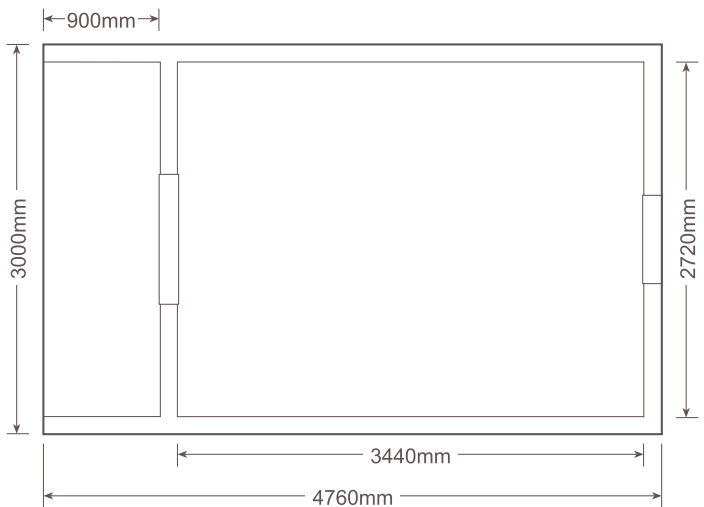
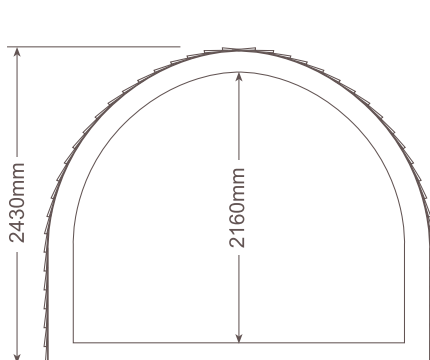
### Dimensions\*

External Width: 3000mm    Internal Width: 2720mm  
External Length: 4760mm    Internal Length: 3440mm  
External Height: 2430mm    Internal Height: 2160mm

External Deck Area: 900mm x 2760mm  
Door Dimensions: 1760mm x 1000mm  
Window Dimensions: 850mm x 680mm

Internal Floor Area: 9.96m<sup>2</sup>

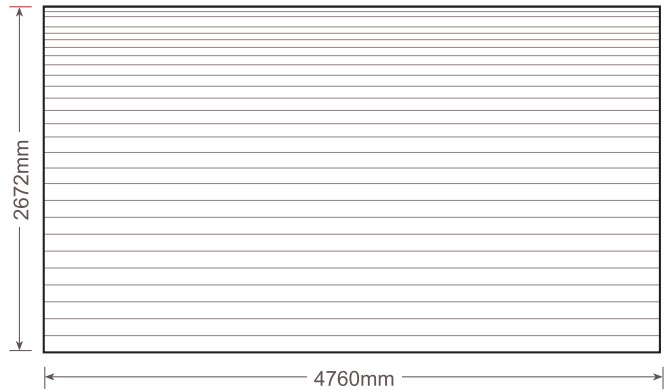
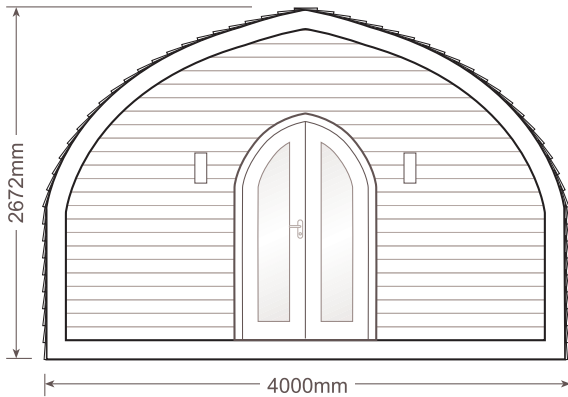
## Internal



\*Sizes are approximate, as these are hand crafted products measurements may vary.

# 4mtr Plans

## External

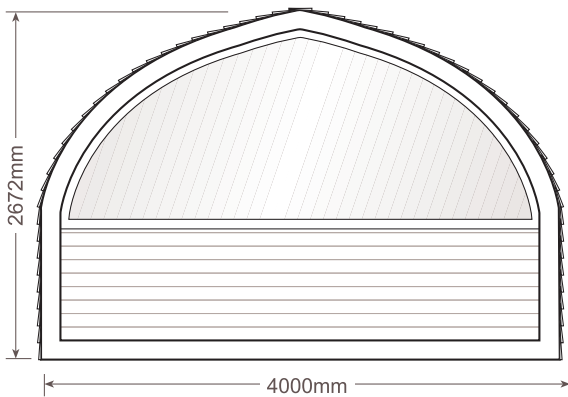


## Dimensions\*

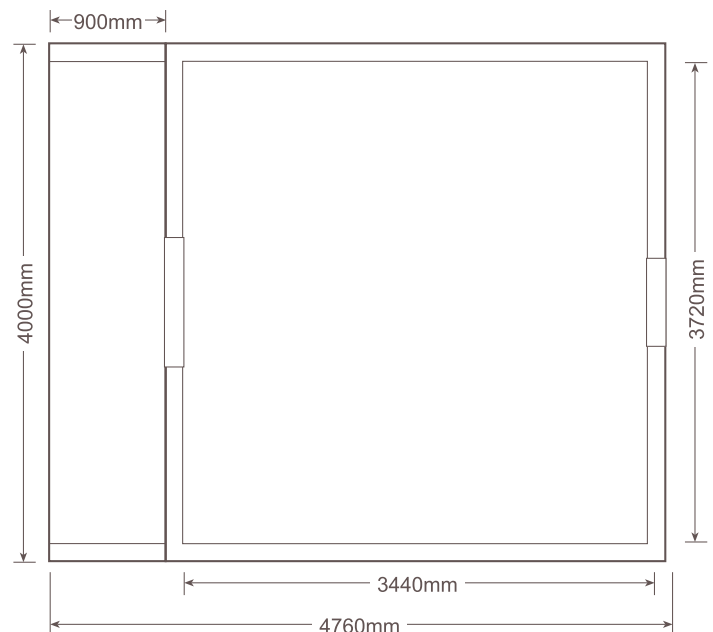
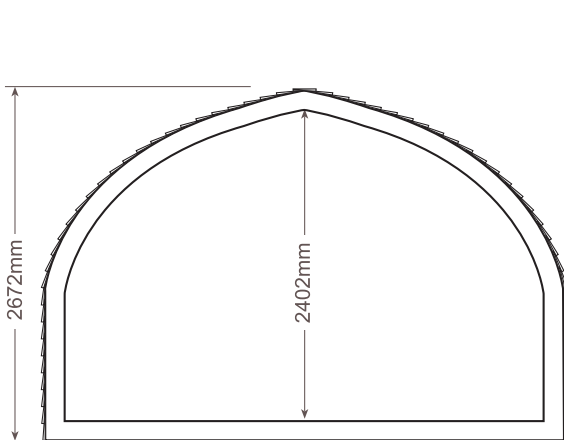
External Width: 4000mm    Internal Width: 3720mm  
External Length: 4760mm    Internal Length: 3440mm  
External Height: 2672mm    Internal Height: 2402mm

External Deck Area: 900mm x 3760mm  
Door Dimensions: 1760mm x 1000mm  
Window Dimensions: 1350mm x 3500mm

Internal Floor Area: 12.80m<sup>2</sup>

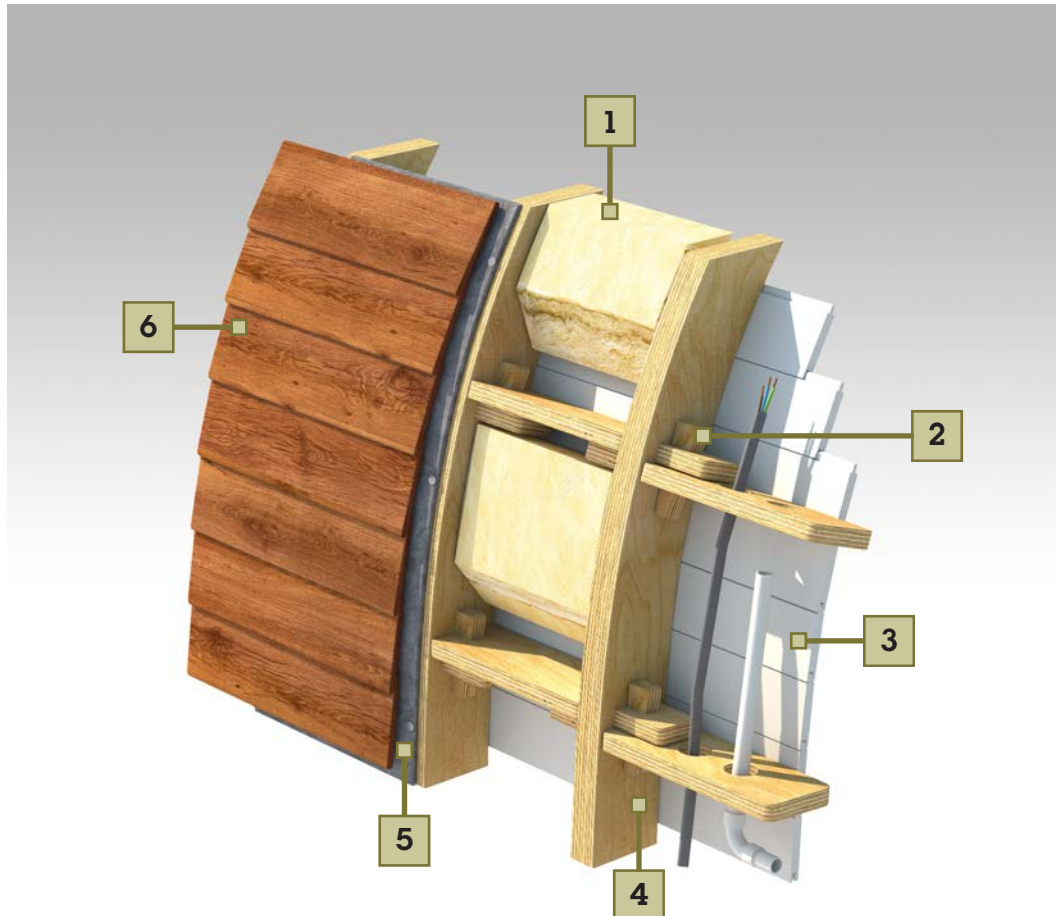


## Internal



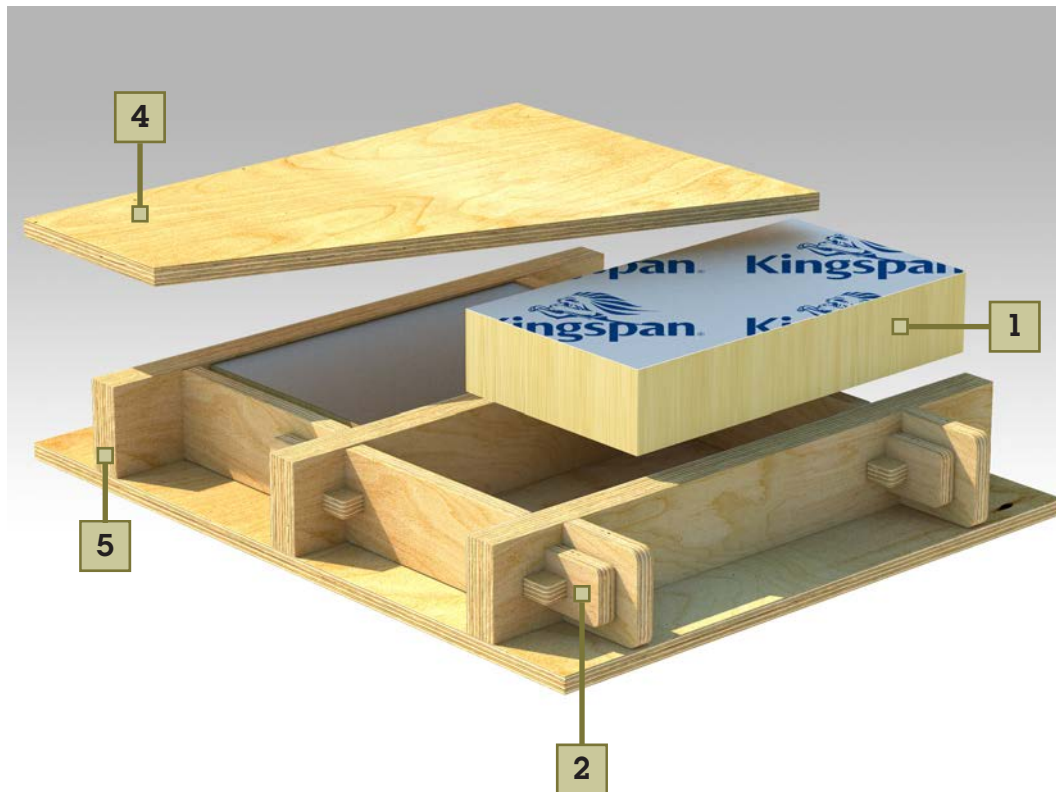
\*Sizes are approximate, as these are hand crafted products measurements may vary.

## Technical - Walls



- 1** The framework cavity is insulated with a highly efficient layer of ecologically sound 100mm flexible mineral wool. The semi-rigid shape of the insulation allows it to be measured and cut accurately filling the void more completely, thereby providing excellent all year round thermal and acoustic performance.
- 2** The rigidity of the framework is compounded by the use of a tried and trusted tusk tenon and wedge jointing system, this jointing method creates a uniquely strong and versatile joint.
- 3** The interior of our Pod is lined with select grade Scandinavian redwood tongue and groove cladding. The primed and beautifully finished horizontal cladding not only adds a feeling of depth and substance to the interior, but also compounds the buildings overall structural rigidity.
- 4** The framework is constructed from a dual layer of bonded 18mm 'Grade A' structural plywood which has been sustainably sourced directly from Finland. Professionally cut from a unique CAD design by commercial CNC machinery, the precision framework design delivers a rigid and long lasting monocoque structure.
- 5** The slow grown Western Red Cedar exterior cladding used on our buildings is not only aesthetically pleasing, but it is exceptionally durable, stable and of course ethically sourced. Our Western Red Cedar cladding can be either hand oiled to preserve its rich colour or alternatively left untreated turning a muted silver grey over the seasons.
- 6** The rigidity of the framework is compounded by the use of a tried and trusted tusk tenon and wedge jointing system, this jointing method creates a uniquely strong and versatile joint.

## Technical - Floors



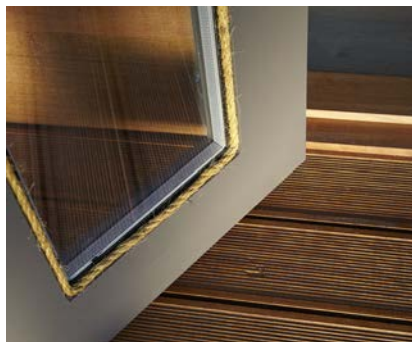
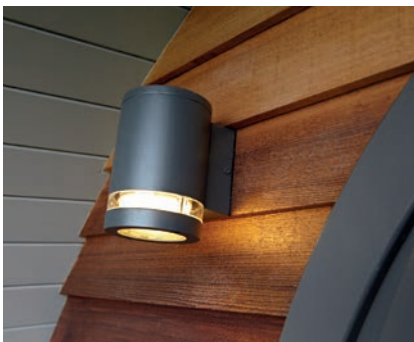
- 1 The base framework cavity is insulated with premium performance 100mm foil faced rigid insulation. The high compressive strength and water resistance of the insulation makes it ideal for the floor void, providing excellent all year round thermal performance.
- 2 The rigidity of the floor framework is compounded by the use of a tried and trusted tusk tenon and wedge jointing system, this jointing method creates a uniquely strong and versatile joint.
- 3 Constructed from a dual layer of bonded 18mm 'Grade A' structural plywood which has been sustainably sourced directly from Finland. Professionally cut from a unique CAD design by commercial CNC machinery, the precision framework design delivers a rigid and long lasting permanent base framework.
- 4 Our subfloor is constructed from exterior grade hardwood ply bonded with water resistant adhesives to create a strong, flat and rigid base layer.

## Key features

All Pods from Garden Hideouts have been designed to offer a practical and attractive space that has been built for durability, warmth and weather-proofing.

Each building is constructed from a dual layer of bonded 18mm 'Grade A' structural ply. This has been sustainably sourced directly from Finland before being professionally cut from a unique CAD design on our CNC machinery. The building's precision built framework utilises the tried and trusted tusk tenon and wedge system. The result is uniquely strong series of joints, delivering a rigid, robust and long-lasting structural frame.

- **Western Red Cedar exterior cladding: ethically-sourced and slow-grown.**  
Can be either hand-oiled to preserve its rich colour or left untreated to turn silver-grey over the seasons.
- **Select grade Scandinavian Redwood tongue and groove interior cladding.**  
Primed, painted and immaculately finished
- **Framework cavity insulated with a layer of ecologically sound 100mm flexible mineral wool.** The semi-rigid shape of the insulation allows it to be measured and cut accurately filling the void more completely, thereby providing excellent all year round thermal and acoustic performance.
- **'A' rated double glazed bespoke wooden door and window units.**
- **Optional distinctive half-glazed end panel.**
- **Quick-Step Impressive laminate flooring with water-repellent 'Hydroseal' coating.**
- **Certified electrical system with high quality finish outlets.**
- **Fully delivered to site and professionally constructed.**



# General Specification

## Foundations

The most suitable type of foundation will be selected for the ground conditions where the Pod is to be sited to ensure a secure base for the building.

## Framework

### Walls

100mm x 36mm sustainably sourced precision cut Grade 'A' structural ply fixed at joint cross sections with a tusk tenon and wedge system.

### Floor

18mm Grade 'A' quality exterior ply floor and internal subfloor.

## Insulation

### Walls

100mm flexible mineral wool insulation with a U-value 0.22w/m<sup>2</sup>K\* installed within each natural cavity section of the framework.

### Floor

100mm foil faced rigid foam insulation board with a U-value of 0.26w/m<sup>2</sup>K\* installed within the floor and subfloor cavity.

## External Cladding

150mm x 15mm Western Redwood Cedar featheredge boards installed with a 50mm overlap and secured with galvanised fixings over a high performance breathable vapour membrane. Hand finished with satin-matt microporous UV protection oil.

## Internal Cladding

90mm x 20mm Scandinavian Redwood tongue and groove. Hand primed and painted with BS6150 compliant high quality acrylic primer and emulsion.

## Electrics & Lighting

17th Edition compliant consumer unit and wiring with current Part P certification.

## Doors & Windows

Tricoya wood double glazed 'A' rated toughened glass units. So hard wearing and weather resistant they come with a 50 year guarantee. Fungal resistant and super-low maintenance.



# Entertainment Pod Specifics

## **Media Units**

The two painted MDF floating units are approximately 2m wide and 450mm high. Their low level design is stylish and practical, and is around 75mm deep to accommodate even substantial media equipment. Each unit has two handy drawers sandwiched at either end with a choice of finishes.

## **Media systems**

A surround sound amplifier and TV receiving equipment can be housed on the right hand wall unit. Supplied as standard is a surround sound effect system connected to a 60" LCD TV above. A Midi sound system is also standard and comes complete with CD and radio. This is ideally positioned on the unit under the end wall window.

## **Floorcoverings**

The entire floor is fitted with Quick-Step Impressive laminate flooring, which not only looks aesthetically pleasing but also has a water-repellent 'Hydroseal' coating to provide a durable surface.

## **Heating**

Underfloor heating combines with high-efficiency insulation to provide a supremely warm and comfortable environment. The heating is operated via a timer unit for maximum convenience and economy.

## **Lighting**

As well as a set of downlighters for an atmospheric effect, there are also wall lights or angled spotlights available to provide the most appropriate additional illumination.

## **Sockets**

Polished chrome 240v sockets are spaced around the Pod to suit specific needs. All sockets come complete with a USB adapter.

## Optional Extras

All our models are designed to a high standard specification within each range. However, because we design and construct your building from scratch you can of course request upgrades or additional items for your build. Your surveyor will be happy to talk through with you what exactly can be achieved by way of tailoring a standard specification or adding a number of additional items.

## Warranties

In order that you can enjoy your building for years to come we ensure that all our models are constructed to the very highest standards using only the finest quality materials. However, in the event that you do experience any issue with your buildings construction or it's component parts, we provide the following warranty cover as standard on all our ranges, right from the date that your building is built.

### **25-year Full Structural Framework Warranty**

The strength and integrity of your buildings framework is such, that properly maintained and protected from the elements it will remain strong and stable for years to come. Our unique 25 year structural warranty provides the ultimate peace of mind.

### **Full 12 months Warranty**

We guarantee that our buildings will be free from any significant material defect or faulty workmanship for a period of 12 months from the date of delivery or construction. The warranty covers all workmanship, materials, standard and buyer specified fixtures and fittings, wiring and utility connections.

